

# AUTOTRONIK

Fertigungssysteme für die **Elektronikindustrie**

**AUTOTRONIK-SMT GmbH**  
Sulzbacher Str. 111  
D-92224 Amberg

Tel +49 (0) 9621-600 691  
Fax +49 (0) 9621-600 692

office@autotronik-smt.com  
[www.autotronik-smt.de](http://www.autotronik-smt.de)

# MODEL: BA388E2-V

## SMT-PICK&PLACE MACHINE

- ▶ Perfect for medium & large volume production
- ▶ High Accuracy and high Flexibility from 01005 up to 0.3 mm fine pitch
- ▶ 256 intelligent Auto Tape Feeder
- ▶ Ballscrews in X-Y direction
- ▶ AC Servo Motors X/Y/Z
- ▶ Up to 6.400 CPH
- ▶ COGNEX Alignment System „Vision On the Fly“ with Digital Camera
- ▶ Digital Bottom Vision Kamera for fine pitch QFP & BGA
- ▶ Automatic Reference Point Recognition
- ▶ Conveyor System (option)
- ▶ EtherCAT
- ▶ Universal CAD Conversion
- ▶ Barcode Reader for Feeder setup
- ▶ Tracability of production data
- ▶ CANBUS System (option)



Innovative Features



Unbeatable Service



Worldwide for you!



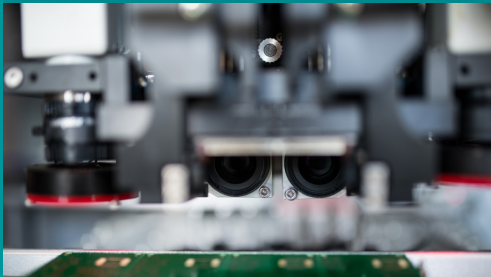
Specialist in small and medium-sized manufacturing.



Quality & innovation at a fair price.



All from one hand.



CANBUS connects all the modules working throughout the feeder controlling, so that they can work together to run effectively, more intelligence and fewer wires.

EtherCAT®

EtherCAT sets new standards for real-time performance and topology flexibility. Strongly simplified machine architecture and more efficient processes.

# MODEL: BA388E2-V

## SMT-PICK&PLACE MACHINE

### SPEZIFICATION:

- Number of Heads (Vision on the Fly): 2
- Placement rate (under optimum condition):
  - 6400 CPH, 5500 CPH (IPC 9850)
- Feeder capacity (8mm): up to 256 Tape Feeders
- Feeder capacity (8mm) with conveyor: up to 176 Tape Feeders
- IC Tray capacity: up to 6 Waffle Trays
- Component Sense: Vision detection
- Component Size:
  - Handled by digital head camera:
    - smallest: 0.4 x 0.2 mm
    - largest: 16 x 14 mm
  - Handled by fixed digital Bottom Vision Camera:
    - largest: 150 x 100 mm
- Resolution (AC Servo Motors):
  - X/Y Axis: 0.005 mm
  - Z Axis: 0.01 mm
- Rotation: 0° to 360° (0.09°/step)
- Placement Accuracy: +/- 0.03 mm
- X/Y Repeatability: +/- 0.01 mm
- Placement Area without conveyor:
  - without Waffle Tray: 1050 x 450 mm
- Placement Area with conveyor:
  - without Waffle Tray: 1340 x 400 mm
- Programming:
  - Direct Input
  - Teach-In by Camera
  - CAD Access (option)
  - Barcode Reader (option)
  - Tracability of production data (option)
- Industrial PC with Windows 10
- Power Supply: 230VAC
- Power: 3800W
- Pressure: 75 psi (5.5 bar), max. 200L/min
- Machine Size: 2050 x 1670 x 1480 mm (L x W x H)
- Weight: 1560kg

